



2026 International Students Course Guide

NZMANZMANZMA

WELCOME TO NZMA

The world of work and learning continues to evolve. Today, learners need more than qualifications – they need confidence, capability, and clear pathways into employment and further opportunity.

At NZMA we're not afraid of change. We pride ourselves on our innovative spirit and look to pursue excellence in everything we do.

The addition of two new brands – Builders Academy NZ and Land Based Training – reflects this commitment. By bringing construction, quantity surveying, and agriculture qualifications into our product suite, we have strengthened our ability to support learners into industries that are essential to New Zealand's future. These programmes are designed in close connection with industry, combining hands-on learning, real-world environments, and clear pathways into employment.

The DNA of NZMA is unique. Our students, our people, and the culture we've created here is like no other place. Our organisation creates an environment that everyone can belong to, putting students at the centre of what we do by providing a positive educational experience for all students, so they learn to move ahead. This clear focus helps the students find their version of success regardless of the industry they will enter as a graduate.

At NZMA we're changing the landscape of education into something better. We're not just tutorials and lectures, we're a place where you can evolve through personal and educational change, a place where students' potential is nurtured and respected. For some this means being supported with a chance at a better future, for others, we can join them as they take the first step on their new journey.



KYLIE WILSON
Chief Executive Officer
NZMA



Contents

Aotearoa New Zealand	4	■ Construction Pathway	12	Support on Campus	26
About NZMA	7	■ Health Pathway	16	Scholarships & Accommodation	27
Where we are in New Zealand	8	■ Pharmacy Pathway	18	Entry Requirements	28
NZMA Career Support	9	■ Cookery Pathway	20	English Language Requirements	29
Course Categories	10	■ Hospitality Pathway	22	Study Options and Fees	30
		■ Sport Pathway	24	How to Apply	31

Aotearoa New Zealand, a great place to study, live and work

New Zealand is world-famous for its friendly people, spectacular landscape and relaxed lifestyle. Discover what it's like to be a student here. Learn about the different types of accommodation. Explore our cities and regions, and find out about the cost of living.

Feel safe and secure

New Zealand is recognised as one of the most peaceful, least-corrupt countries in the world, giving you a sense of security and confidence while you concentrate on your studies or as you explore our beautiful country.

Work-life balanced lifestyle

New Zealand is known for its healthy balance between career and personal life. Many companies offer flexible working hours and generous holiday leave, enabling employees to pursue interests outside of work.

World-class education

All of New Zealand's eight universities rank in the top 2% globally. Students are encouraged to solve problems, collaborate, and innovate.



Work opportunities

With a Student Visa¹ in New Zealand, students can work up to 25 hours per week during their studies, gaining valuable work experience, building professional networks, and developing skills that enhance their employability.



Embracing all peoples

New Zealanders, or Kiwis, embrace people from diverse backgrounds with warmth and respect. Our friendly culture, our rich history, our laidback, open-mindedness and our diverse traditions respect everyone's rights, beliefs, and choices.



Globally-recognised qualifications

A New Zealand qualification is a valuable asset that can give you a head start in the international job market. It is recognised by over 50 countries. These include the United States, the United Kingdom and Australia.



A high standard of living

New Zealand boasts a high standard of living, with excellent education, healthcare, transport, and infrastructure. Our economy is strong, and our political system is stable. The country's transparent legal and governmental systems safeguard the rights of both citizens and visitors.

Quick facts

NZ Population:
5,330,600*

Largest city:
Auckland – population
1,711,000*

Capital City:
Wellington

Official languages:
English, Māori,
New Zealand Sign
Language

Currency:
New Zealand dollar

Climate:
Summer – Ave. 24°C
(75°F)
Winter – Ave. 16°C
(60°F)

Warmest months:
January, February

Coldest months:
July, August

*Statistics New Zealand,
June 2025



"There was something profoundly different about New Zealand compared with the rest of the world, and it was something the world could learn from.

It's a certain sense of duty to each other, that you're part of the team, that you will sacrifice for each other. That empathy, that love and respect, whatever it is that binds you together – we hope to be as much a part of that as we can be."

JAMES CAMERON
Hollywood Director of the movie, Avatar

1. For more information, please visit
www.immigration.govt.nz/visas/fee-paying-student-visa/




Top 3
safest country
to study abroad
BusinessBecause
(GMAC) 2025


#1
country globally for the
best work-life balance
Global employment
company, Remote


3rd
most peaceful
country globally
Global peace index
score 2025


Top 2%
universities
in the world
QS World University
Rankings 2026

87%

STUDENTS WOULD
RECOMMEND
NZMA*

88%

OF STUDENTS SAY THE
EXPERIENCE HAS MET
THEIR EXPECTATIONS*

94%

OF INTERNATIONAL
STUDENT GRADUATES
ARE IN EMPLOYMENT OR
FURTHER STUDY AS OF
JANUARY 2025

*Statistics based on 2024 student survey

Endorsement from New Zealand Government

NZMA, part of NZMA Ltd, is New Zealand's largest Category One Private Training Establishment. With the FernMark Licence (NZFM100751) granted by the Government, NZMA's credibility and academic quality are highlighted.

The FernMark, a symbol of New Zealand's heritage, embodies values of kaitiaki, integrity, and ingenuity.

History of the Silver Fern

The Silver Fern, one of New Zealand's most recognised symbols, has represented our nation since the 19th century—worn by sports teams, honoured by soldiers, and symbolising guidance. Once used by Māori hunters to illuminate paths, it now embodies New Zealand pride. Supported by the Government and businesses, the FernMark invites international students to experience our unique story.



About NZMA

Here at NZMA, we don't just see a potential student, we see the student's potential to learn, grow and change - whether they know their career or have no idea. We've created a learning environment that is fun, supportive and helps all of our students to thrive in their own way.

We change lives, in big ways and small. Regardless of which campus you're considering for potential students, at NZMA we all share the same goal: To help every single student learn to move ahead.

Starting from the first welcoming smile on day one, our students will experience tutors who go the extra mile, find themselves heard when no one else will listen, and on graduation day students will not only feel proud of themselves - they'll feel our collective pride for them as well.



As a Category 1 provider, students can choose from over 30 courses, including those offered by three other schools within the NZMA family: The Culinary Collective, The New Zealand Institute of Sport, and The Builders Academy New Zealand.

Highly rated education & support

NZQA Category 1

At NZMA we are committed to offering quality learning. We are ranked as a Category 1 provider on NZQA's EER rating, which is the best rating possible for education providers.

This means that we're in the highest tier of tertiary educators. We hold ourselves to these standards with every interaction we have with our students.

Top-of-the- line facilities

Our purpose-built facilities go far beyond standard classrooms. On our various campuses, you'll find commercial training kitchens, student-run cafés, gyms, resource rooms, computer labs, gaming studios and barista training areas to help students build their confidence in real-world environments.

Our two dedicated Auckland Trades campuses feature large outdoor areas where students can work on projects, including timber sleepouts.

Small details, big difference

With smaller class sizes, students aren't just another number. Our welcoming and friendly study environment provides more one-on-one time with their tutors - and more chance to get to know their classmates.

Less students in each class also means that our highly experienced tutors can adapt the way they teach to suit individual learning styles.

Where we are in New Zealand



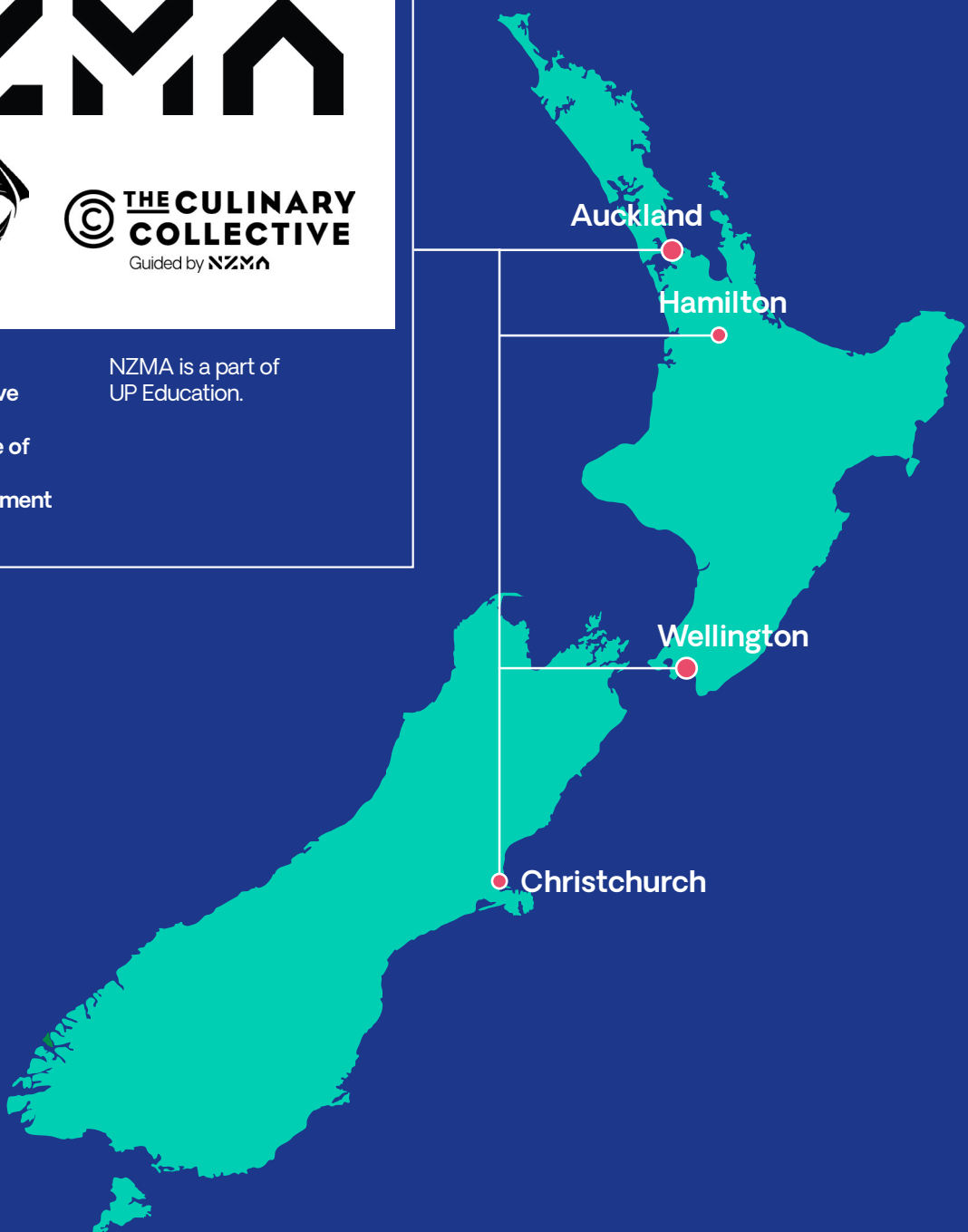
Guided by NZMA

Guided by NZMA

NZMA Family including:

- » The Culinary Collective (TCC)
- » New Zealand Institute of Sport (NZIS)
- » New Zealand Management Academies (NZMA)

NZMA is a part of UP Education.



NZMA Career Support

We have an NZMA Careers team to help you with everything you need to prepare you for work, and help find you work. Our Career and Employment navigators will help you with valuable job hunting skills, like CV writing and interview techniques, help you find part-time work while you study and full-time work once you graduate. Contact a Careers Advisor at careers@nzma.ac.nz

We have great partnerships with a variety of employers throughout New Zealand. We nurture these relationships and are proud to be working together to benefit the industries we love. You can find additional information on our website at nzma.ac.nz/why-choose-nzma/careers

Here are a few of the employers who have partnered with us.

'NZMA students bring with them a real sense of passion and drive for hospitality and catering into the workplace. They are an asset to our service. Our continued relationship with NZMA stands testament to the quality and standard of hospitality students engaged each year. This replicates into the directive of all the trainers, tutors and employment relations team that keep their finger on the pulse of industry trends and demands.'

JOSH COLL, STAFFING MANAGER
- Eden Park Catering

Course Categories

At NZMA, we offer a diverse range of vocational courses designed to help you move ahead in your chosen career. Explore our popular programmes.



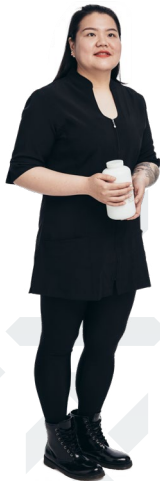
NZMA P.12 Construction

Choosing from Construction Management, Quantity Surveying, Electrical Engineering, Plumbing & Gasfitting, or Painting & Plastering means students will finish with everything they need to secure an apprenticeship or an entry-level job in the trades industries.



NZMA P.16 Health

At NZMA our range of health courses will help students learn the basics of health to become a healthcare support worker in the community; or they can build a foundation for further study as a nurse, midwife or public health worker.



NZMA P.18 Pharmacy

Is someone you know good with numbers, enjoys dealing with people and has an interest in health? An NZMA Pharmacy Technician qualification can set them up for a lifetime of job security with the chance to grow and build their skills.



NZMA P.20 Cookery

Whether they love baking or dream of becoming a rockstar chef, our practical, hands-on courses help students build work-ready kitchen skills to start their journey as a chef or baker. Taught by The Culinary Collective - NZMA's cooking & baking school.



NZMA P.22 Hospitality

Whether they want to become a bartender, barista, work in a hotel, or run their own cafe one day, students will learn key skills, build their confidence and get work experience to help them on their way.

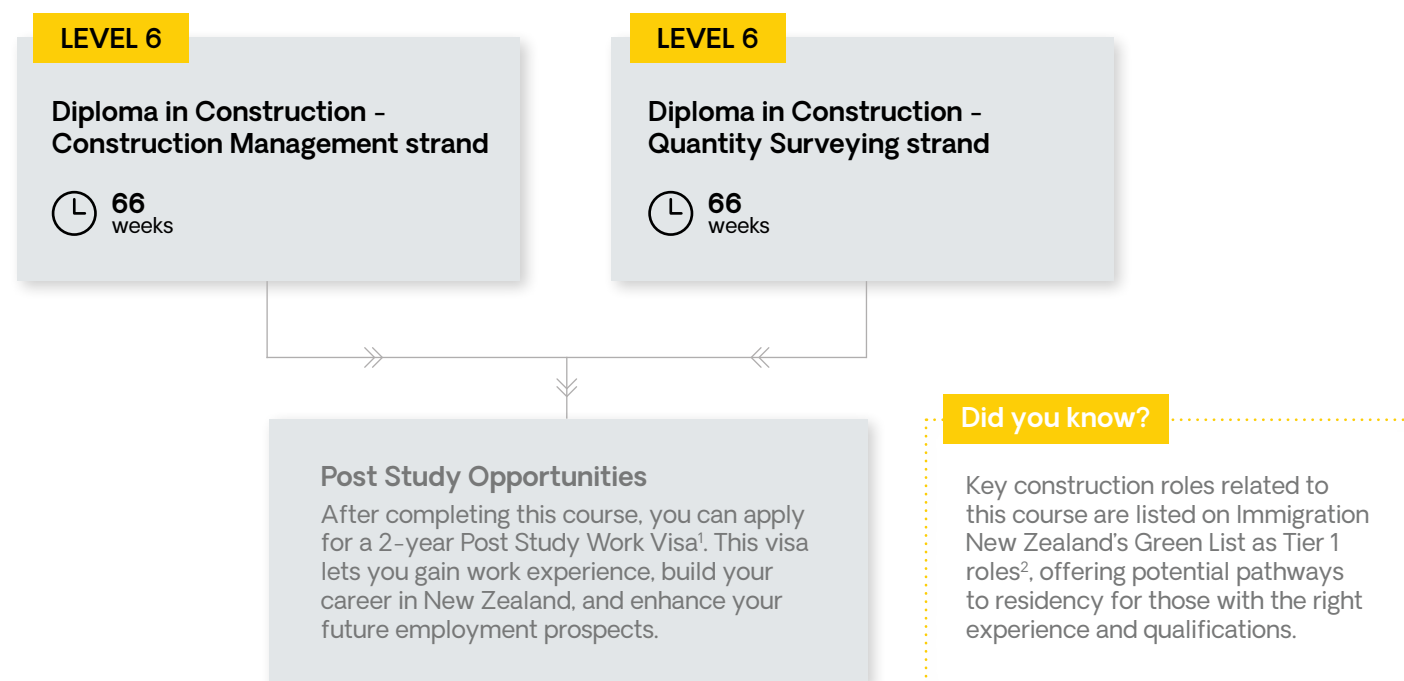


NZMA P.24 Sport

Students will build their confidence and passion for sport with these fun courses. They'll learn to develop custom fitness plans, take part in fitness training, go on field trips, experience mentoring and more. Taught by NZ Institute of Sport – NZMA's sport & fitness school.



Construction Pathway



1. With the Post Study Work Visa you receive upon completing the New Zealand Diploma in Construction (Level 6), you can pursue employment in a role aligned with your field of study.
2. Learn more about New Zealand Green List roles at www.immigration.govt.nz/new-zealand-visas/preparing-a-visa-application/working-in-nz/qualifications-for-work/green-list-occupations

Career opportunities

Construction Management

- Construction manager
- Project manager
- Construction supervisor
- Site manager

Quantity Surveying

- Quantity surveyor
- Construction manager
- Building surveyor
- Property inspector
- Building inspector



Scan the QR code to find out more



Our Construction Courses

LEVEL
6

WEEKS
66

Diploma in Construction - Construction Management strand

This programme turns your construction skills into professional expertise with flexible study, expert guidance, and hands-on project experience.

In Year 1, you'll learn:

- Effective communication on a construction project
- Operating within legislative requirements, ensuring safety and legality of projects
- Understanding and selecting various materials and finishes
- Knowledge of structural principles and design
- Knowledge of the regulatory environments within commercial construction
- Understanding of construction contract management within a project

In Year 2, you'll learn:

- Advanced knowledge in planning, managing, and monitoring construction contracts
- Technical sketching skills and understanding working drawings
- Understanding environmental impacts and feasibility of building design and material
- Practicing effective site management and personnel coordination
- Creating and implementing health & safety and quality assurance plans
- Applying problem-solving techniques to daily construction project management

LEVEL
6

WEEKS
66

Diploma in Construction - Quantity Surveying strand

Advance your construction career with our industry-focused Diploma in Construction, specialising in Quantity Surveying.

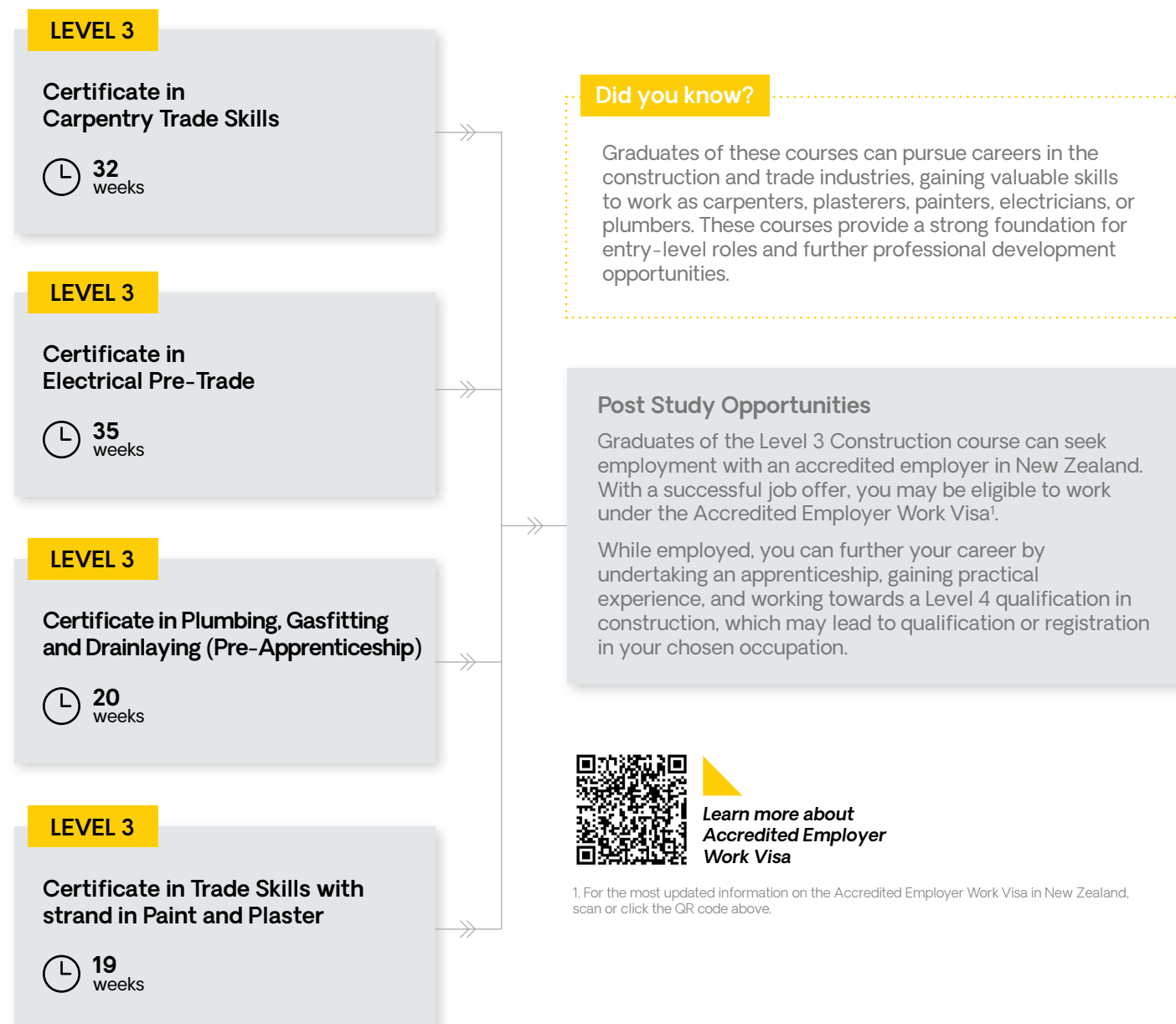
In Year 2, you'll learn:

- Managing variations and expenditure control during projects
- Knowledge in estimating for small to large building works
- Understanding of commercial designs feasibility and design
- How to measure for small to large building works
- Creating and implementing cost planning and feasibility
- Applying problem-solving techniques to daily construction project management

This programme is delivered with a blended (online and on-campus) delivery style. It provides a classroom environment with dedicated tutor who facilitates group work, workshops, recapping sessions and provides activities on and offsite. The programme also has the learning modules in our own online learning platform that you use in class, allowing you to work at your own pace.



Construction Pathway



Learn more about Accredited Employer Work Visa

1. For the most updated information on the Accredited Employer Work Visa in New Zealand, scan or click the QR code above.



Scan the QR code to find out more



Our Construction Courses

LEVEL
3

WEEKS
32

Certificate in Carpentry Trade Skills

This course equips you with essential carpentry skills, including timber-framed construction, tool use, and practical trade techniques, to start your journey as a builder's apprentice.

Build a prefabricated timber sleepout while learning house construction basics—foundations, framing, cladding, and more—and understanding the roles of contractors and subcontractors.

LEVEL
3

WEEKS
35

Certificate in Electrical Engineering

This course equips you for entry-level electrical roles or further study without needing an apprenticeship agreement.

Gain practical experience wiring a sleepout and performing prescribed electrical work safely under the supervision of a licensed electrician. The course combines campus-based study, online learning, and self-directed study for a flexible learning experience.

LEVEL
3

WEEKS
20

Certificate in Plumbing, Gasfitting and Drainlaying (Pre-Apprenticeship)

Start your career in the booming construction sector with our pre-apprenticeship programme for plumbing, gasfitting, or drainlaying. Gain in-demand skills, great earning potential, and hands-on training to prepare you for success in this lucrative field.

Graduate with skills equivalent to a first-year apprentice, plus improved numeracy and literacy. This course combines campus-based learning with 16 hours of self-directed study per week for a flexible, comprehensive training experience.

LEVEL
3

WEEKS
19

Certificate in Trade Skills with strand in Paint and Plaster

In just 19 weeks you'll gain the skills you need to become an apprentice or labourer in construction or allied trades.

If you already have a bit of experience in the construction industry, or have a Level 1 or 2 pre-trade qualification, this programme is your perfect next step.

It's fun, practical and workshop-based and is a great stepping stone to a career as a plasterer or painter.



Health Pathway

LEVEL 4

Certificate in Health and Wellbeing (Social and Community Services)

33 weeks **6-week industry experience**

Post Study Opportunities

Seek employment with an accredited employer¹ in New Zealand and if successful, you may have the option to work for up to 3 or 5 years on the Accredited Employer Work Visa², depending on your job's skill level.

Did you know?

After gaining work experience in New Zealand, graduates may explore pathways such as applying for a Work-to-Residency Visa, provided they meet the eligibility criteria.

This can be a valuable opportunity for those aiming to build a long-term future in New Zealand.



Learn more about
**Accredited Employer
Work Visa**

1. Most of the employers who offer paid internships are Accredited Employers.
2. For the most updated information on the Accredited Employer Work Visa in New Zealand, scan or click the QR code above.



**MIGUEL JOSE
MENDOZA NAVARRO**
Graduate, Certificate in Health and Wellbeing (Advanced Support) (Level 4)

"My tutors emphasised that self-confidence and communication are key qualities for a health supporter. They consistently prepared the class using various materials such as presentations and role-playing, making the learning experience more immersive for students."

Scan to watch Miguel's
testimonial video



Scan the QR code to find out more



Our Health Courses

LEVEL
4

WEEKS
33

Certificate in Health and Wellbeing (Social and Community Services)

- Mental Health and Addiction Support strand

Do you want to support individuals on their journey to improved mental health and help those struggling with addiction?

The most common mental health issues in New Zealand include anxiety, depression, and substance abuse.

This course explores Aotearoa's health and well-being system, focusing on Mental Health and Addiction Support, equipping you for community-focused careers.

LEVEL
4

WEEKS
33

Certificate in Health and Wellbeing (Social and Community Services)

- Community Health Work strand

Are you interested in improving the health and well-being of your community?

In this course, you will learn about Aotearoa's health and well-being sector, then focus on gaining the knowledge and skills to become an effective community health worker. You'll learn how to work with people from diverse backgrounds, collaborate with your colleagues, and meet the needs of people with community service needs.

LEVEL
4

WEEKS
33

Certificate in Health and Wellbeing (Social and Community Services)

- Disability Support strand

This programme equips students to make a meaningful impact in healthcare by combining theory with practical skills. It prepares graduates for diverse roles in culturally and ethically responsible disability support and care.

Students will develop key skills in communication, cultural identity, professional ethics, and Māori health practices. With a focus on disability support, they will be empowered to address sector challenges, fostering autonomy, resilience, and self-determination.

Career opportunities

- ▶ Aged caregiver
- ▶ Residential caregiver
- ▶ Youth work
- ▶ Refugee support
- ▶ Family violence support
- ▶ Disability support worker
- ▶ Personal care assistant
- ▶ Nurse aide
- ▶ Health and wellbeing mentor or officer
- ▶ Mental health and addictions support



Pharmacy Pathway

LEVEL 5

Pharmacy Levels 3, 4 & 5 Combined (International)

57 weeks 530-hour internship

Employment

Seek employment with an accredited employer¹ in New Zealand and if successful, you may have the option to work for up to 5 years on the Accredited Employer Work Visa².

Did you know?

New Zealand's health system currently has an estimated need for around 620 **pharmacy technicians**³, reflecting ongoing workforce demand. Completing a pharmacy technician qualification gives you the skills employers are actively looking for in community and hospital pharmacies.



Learn more about Accredited Employer Work Visa

1. Most of the employers who offer paid internships are Accredited Employers.
2. For the most updated information on the Accredited Employer Work Visa in New Zealand, scan or click the QR code above.
3. Source: Te Whatu Ora | Health Workforce Plan 2024 (Pharmacy) ([view full report](#))



CHRISTINE DEJANDO
Graduate, Certificate in Pharmacy Technician (Level 5)

"I actually started my study with another college before, but the pharmacy I was employed with also had Pharmacist Interns, so it was hard to get support. I decided to study full-time with NZMA, which also meant I would qualify much faster. NZMA teach 'best practice' so I learned the right way to do things – and the reasons why we do things this way. I also really enjoyed learning in-depth about medicines. I have been working at Parkside Pharmacy in Auckland, as a senior technician since I graduated a year ago."



Scan the QR code to find out more



Our Pharmacy Courses

LEVEL 5

WEEKS 57

Pharmacy Levels 3, 4 & 5 Combined (International)

You'll begin your journey toward becoming a pharmacy technician by starting with the Level 3 NZ Certificate in Pharmacy (Introduction to Pharmacy Practice) as part of this programme.

You'll build a strong foundation in pharmacy practice, gain confidence in customer care and advice, and develop practical skills in pharmacy retail operations. As you progress, you'll deepen your understanding of advanced pharmacy concepts and professional practice.

Throughout the programme, you'll gain extensive real-world experience through supervised work placements with pharmacy providers, allowing you to apply your learning in an authentic workplace environment.

On successful completion, you'll graduate with three NZ Certificates in Pharmacy: Level 3 (Introduction to Pharmacy Practice), Level 4 (Pharmacy Technician – Core), and Level 5 (Pharmacy Technician – Advanced).

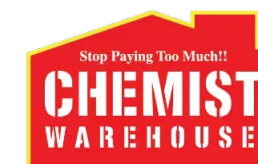
You'll develop a solid understanding of pharmacy law, dispensing techniques and pharmacy health. As part of your training, you'll also build knowledge of anatomy and physiology, alongside the communication and professional skills essential for pharmacy work.

In total, you'll complete **530 hours** of work-based learning and placement with pharmacy providers as part of your training, ensuring you graduate work-ready and confident in a real pharmacy setting.

During your studies, you will get a guaranteed interview with one of our industry partners!

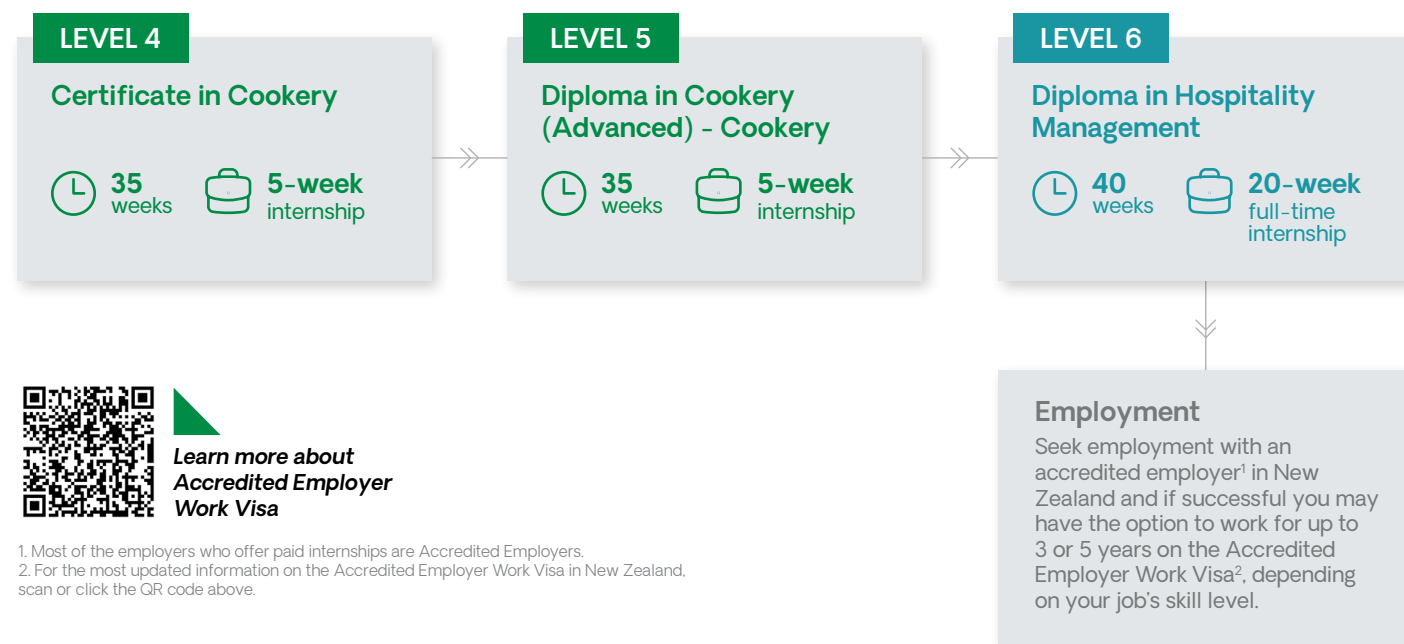
If successful, you will be recruited as a part-time employee while you continue your studies. This will give you valuable experience and great exposure to the industry.

*Guaranteed interviews are subject to job opportunities available.





Cookery & Baking Pathway



1. Most of the employers who offer paid internships are Accredited Employers.
2. For the most updated information on the Accredited Employer Work Visa in New Zealand, scan or click the QR code above.



JAISMEET KAUR KOHLI
Student, Diploma in Cookery Level 4

“NZMA’s tutors are truly amazing. Their extensive experience and approachability make learning here exceptional. Additionally, NZMA actively supports students in securing jobs by offering relevant opportunities aligned with our courses.”

Scan to watch Jaismeet’s testimonial video



Scan the QR code to find out more



Our Cookery & Baking Courses



Certificate in Cookery

Begin your journey to becoming a chef with this exciting course. You’ll step into the vibrant world of a commercial kitchen and gain hands-on experience.

You will explore a range of cooking techniques and styles, igniting your passion for the culinary arts.



Certificate in Baking (Generalist)

Love baking for friends and family? Turn your passion into a profession.

Master the art of perfect bread, doughs, cakes, and cookies using professional equipment. Then, put your skills to the test with a five week internship in a commercial kitchen.



Diploma in Cookery (Advanced) –Cookery strand

Turn up the heat on your cooking skills by learning the ins and outs of becoming a professional chef.

You’ll dive into food trends, practice relationshipbuilding in commercial kitchens, and get the chance to complete an internship to gain invaluable work experience.



Diploma in Hospitality Management

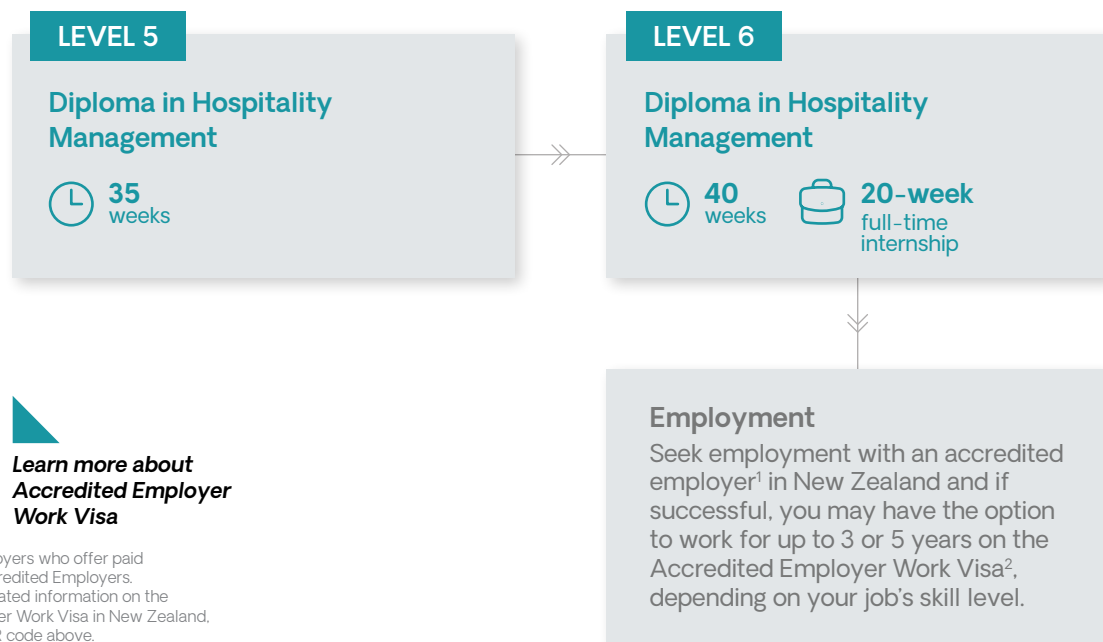
Put on your business hat and learn how to create new food products or services that people will love. This course helps you build on your cooking or baking skills and teaches you how to turn ideas into reality.

You’ll also gain core management skills. Plus, there’s a 20-week full-time internship included in this course.

Courses are delivered by The Culinary Collective, NZMA’s cookery and hospitality school.



Hospitality Pathway



Learn more about
Accredited Employer
Work Visa

1. Most of the employers who offer paid internships are Accredited Employers.
2. For the most updated information on the Accredited Employer Work Visa in New Zealand, scan or click the QR code above.



KARLINA COWAN
Graduate, runs her own cafe business in South Auckland

"NZMA is giving me the skills for my future. I really enjoy coming to college to learn, and see the loving, caring and friendly tutors. They make a huge difference and really make you feel part of the family. We have great opportunities to be involved with work placements and gain great work experience."



Scan the QR code to find out more



Our Hospitality Courses



Diploma in Hospitality Management

Develop the practical skills and industry knowledge you need to nail a supervisory, team leader or junior management role in hospitality.

You'll be able to put your leadership skills to the test by managing events by being in charge of NZMA's training restaurant on a regular basis too. This will give you practical experience with cash handling, restaurant service and functions.

If you have your sights set on hospitality management and want to fast-track your career, this is the ideal programme.



Diploma in Hospitality Management

Start building a brilliant career as a manager in the hospitality industry. This course is ideal if you have completed one of our Level 5 courses or if you already have hospitality service experience.

In the first part of the course, you'll learn about hotel operations, staff management and the tools of the trade. You'll also get up to speed on how to set up and manage large scale events.

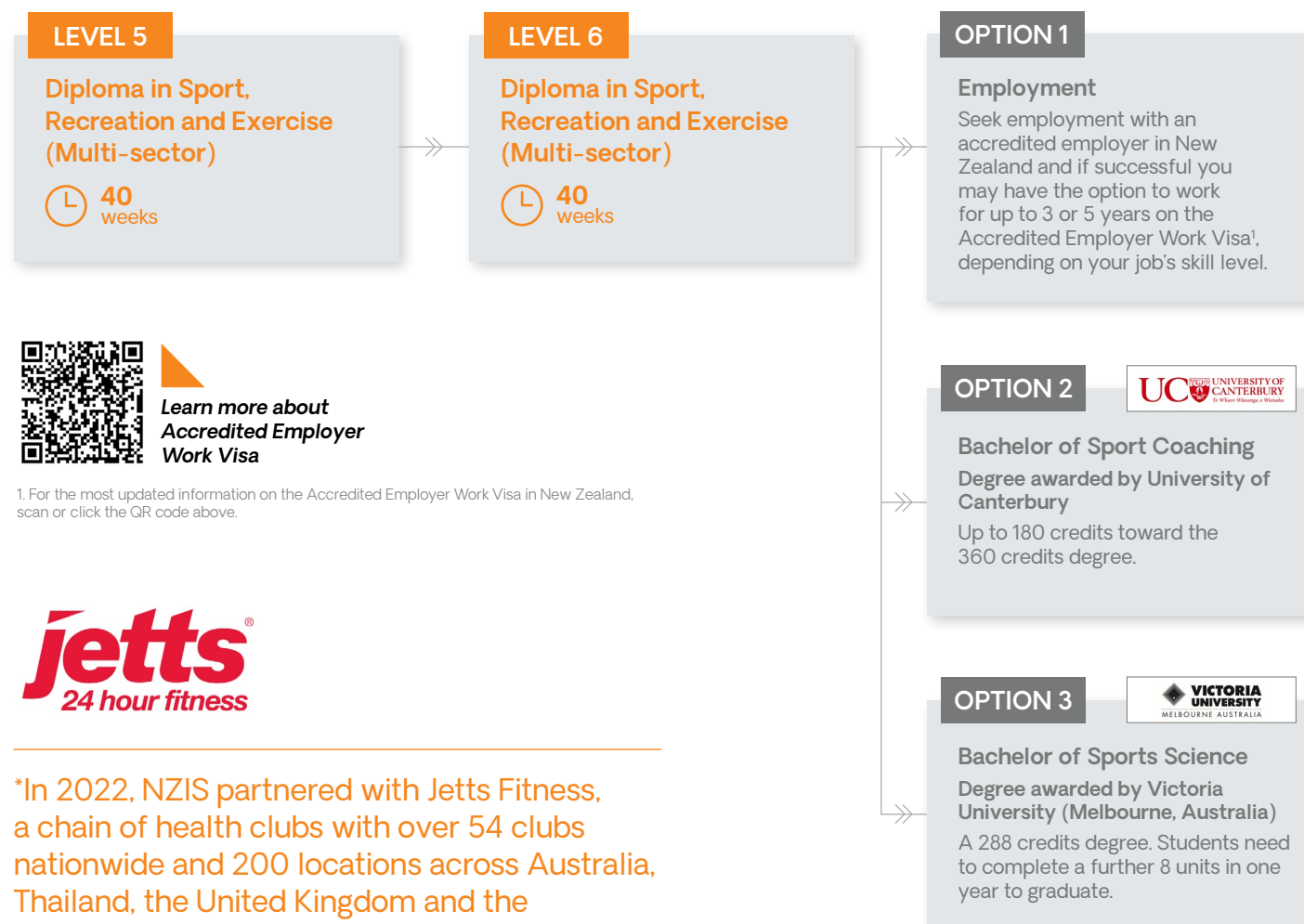
In the second part of the course, you can choose between a **20 week full-time internship** in the industry or **20 weeks of campus-based learning** to further develop your management knowledge before you begin your career in a hotel.

Career opportunities

- ▶ Hotel manager, restaurant manager
- ▶ Event planner
- ▶ Tourism officer
- ▶ Sales and marketing manager
- ▶ Cruise ship manager
- ▶ Guest relations manager



Sport Pathway



*In 2022, NZIS partnered with Jetts Fitness, a chain of health clubs with over 54 clubs nationwide and 200 locations across Australia, Thailand, the United Kingdom and the Netherlands.

Other industry partners are Auckland Rugby League, Wellington Cricket Academy, High Performance Sport New Zealand, Wellington Rugby Football Union.



Scan the QR code to find out more



Our Sport Courses

LEVEL 5
WEEKS 40

Diploma in Sport, Recreation and Exercise (Multi-sector)

This exciting course will teach you all about the inner workings of the body, leadership and management skills, how to analyse performance data and wellness solutions.

Learn how to develop and design health and exercise programmes that have an impact and gain practical work experience learning in real-work sport environments with our industry partners

You will learn through a combination of online learning, practical experience and face to face teaching on campus.

LEVEL 6
WEEKS 40

Diploma in Sport, Recreation and Exercise (Multi-sector)

In this course you will develop advanced leadership and coaching skills and build your knowledge of how to assist high performance athletes in becoming fitter, faster, and stronger.

You'll specialise in Human performance and learn all about the inner workings of the human body and how athletes are trained to increase performance.

Learn about human movement, nutrition and anatomy, training methods and programme design, performance analysis and strategy. Plus gain invaluable industry experience with a work placement in the sport and recreation industry.

Career opportunities

Graduates of this qualification will be employed as a trained professional, capable to lead others and manage a team.

Areas of work include; health providers, outdoor education centres, exercise facilities, iwi organisations, local councils.

Our Sports Courses are delivered by the New Zealand Institute of Sport, NZMA's Sport & Fitness School.



Support on Campus

Learning Support

Studying overseas is exciting and rewarding – but sometimes it can also be challenging. We are here to provide all the support and care students need to achieve their goals.

Our tutors work closely to support students in academics and overall well-being, ensuring a personalised and enriching experience. This collaborative approach extends beyond the classroom to empower every student, fostering a vibrant academic setting where success stories emerge from our close-knit community.

International Student Support

International student support officers help students with accommodation, health, course guidance and pathway options, as well as administration issues such as visa renewals and insurance.

Health and Wellbeing

We have staff trained and registered with Red Cross for minor health and wellbeing issues at the College. If students need further medical treatment, a doctor is available by appointment.

Studentsafe insurance

The Education (Pastoral Care of Tertiary and International Learners) Code of Practice 2021 requires all international students studying in New Zealand to have appropriate health and travel insurance during their period of study.

The Code sets out minimum standards of advice and care that international students can expect and provides a procedure that you can follow if you have any concerns about your education providers and agents. Our responsibility for pastoral care of international students under the Code is for the duration of enrolment.



Scan to learn more about international student support



TRACY XIONG
International Compliance and Support Officer, NZMA

"At NZMA, we provide support to help our international students enjoy their studies with us. Our international induction service and ongoing support aim to assist students in settling down and making the most of their time with us. I am here to address any questions regarding visas, insurance, immigration policies, and more. Additionally, I strive to help international students enjoy their studies and achieve their goals by collaborating closely with internal and external stakeholders, creating a 'home away from home' for our international students."

Scholarship Opportunities

ALL COURSES UP TO 25%

A scholarship of up to 25% is available for all courses for students who meet the eligibility criteria.

HEALTH & PHARMACY UP TO \$7K

A scholarship of up to \$7,000 is available for the **Certificate in Health and Wellbeing (Social and Community Services) (Level 4)** and **Pharmacy Levels 3, 4 & 5 Combined (International)** for students who meet the eligibility criteria.

COOKERY L4+L5 UP TO 14K

A scholarship of up to \$14,000 is available for students enrolling in the **packaged Level 4 and Level 5 Cookery** courses.

HOSPITALITY L5+L6 UP TO 14K

A scholarship of up to \$14,000 is available for students enrolling in the **packaged Level 5 and Level 6 Hospitality** courses.

Please note that not all students will receive the full scholarship amount; the exact amount depends on the student's performance during the interview or the assessment of their personal statement. For more details, please contact the Regional Managers.

If you have any questions about the scholarships, contact the admissions team at admissions@up.education

Accommodation

International students over 18 years of age can live in own arranged accommodation. Some accommodation options are popular, so it is wise to apply for your accommodation as soon as you can. NauMai NZ provides you with useful information about accommodation in New Zealand, and Tenancy Services helps you to understand your rights when you rent.

- Naumai NZ: www.naumainz.studywithnewzealand.govt.nz/discover-new-zealand/living-in-nz
- Tenancy Services: www.tenancy.govt.nz

For more information about homestay booking and airport pickup services, please contact accommodation@up.education

Homestay

Available to all students, homestay is a great way of experiencing New Zealand culture and practising your English every day.

You will have your own room with a bed, desk, lamp and Wi-Fi, and all meals including breakfast and dinner Monday to Friday, and breakfast, lunch and dinner on weekends and public or school holidays. Laundry is also included.

- All homestays are thoroughly checked - the family is interviewed and the home inspected.
- All homestay providers sign a contract agreeing to rules and standards and undergo a vetting procedure by New Zealand Police.

- All students under 18 are visited in their accommodation quarterly by Authorised accommodation assessors.
- All payments to the homestay provider are made via the UP Education Student Fees Trust.
- A 24-hour call centre number is provided in case of emergency.

Entry Requirements

Academic Entry Requirement				
Country	Cookery/Baking (Level 4)	Health (Level 4)	Construction (Level 3) (except Plumbing)	
China	Senior High School Year 1			
Fiji	Completion of Form 5 (Fiji School Leaving Certificate)			
India	Completion of Year 10			
Nepal	Completion of Year 10			
New Zealand	Completion of NCEA Level 1			
Philippines	Completion of Junior High School (Grade 10)			
South Africa	Completion of Grade 10			
Sri Lanka	Completion of Sri Lankan GCE O Levels			
Country	Construction (Level 3) (Plumbing)	Construction Management (Level 6)	Cookery/Patisserie (Level 5)	Pharmacy (Level 3, 4 & 5)
China	Senior High School Year 2			
Fiji	Completion of Form 6 (Fiji School Leaving cert)			
India	Completion of Year 12			
Nepal	Completion of Year 11			
New Zealand	Completion of NCEA Level 2			
Philippines	Completion of HSC (Year 10)			
South Africa	Completion of Year 11			
Sri Lanka	Sri Lankan GCE O levels or completion of As Levels			
Country	Hospitality (Level 5)		Sport (Level 5)	
China	Senior High school graduates			
Fiji	Completion of Form 7 (Year 13)			
India	Completion of HSC (include SSC board, CBSE Board)			
Nepal	High School completion			
New Zealand	NCEA Level 3 with University Entrance or equivalent			
Philippines	Completion of Certificate of Graduation/High School Diploma (Year 12)			
South Africa	Completion of National Senior Certificate			
Sri Lanka	Sri Lankan GCE A levels			

Other Entry Requirement			
Health (Level 4)	Pharmacy (Level 3, 4 & 5)	Cookery / Patisserie (Level 5)	Construction – Certificate in Electrical Engineering (Level 3)
A Police Clearance Certificate and a New Zealand Police Background Check are required before starting any placement in the health and wellbeing sector.	Have an acceptable New Zealand Police vet check prior to the beginning of practical experience and complete an interview with staff at NZMA.	Have relevant commercial kitchen experience and may need to complete an interview with staff at NZMA.	Placement test required.

English Language Requirements*

Internationally Recognised English Proficiency Outcomes for International Students.

Internationally recognised proficiency tests	Programme Level and required outcome			
	Certificate level 3 programmes	Certificate level 4 programmes	Certificate/Diploma level 5 programmes^	Diploma level 6 and above
IELTS (IELTS One Skill Retake can be accepted)	General or Academic score of 5 with no band score lower than 5.	General or Academic score of 5.5 with no band score lower than 5.	Academic score of 5.5 with no band score lower than 5	Academic score of 6 with no band score lower than 5.5
TOEFL Internet-based test (iBT)	Score of 35 (with a writing score of 14).	Score of 46 (with a writing score of 14)	Score of 46 (with a writing score of 14)	Score of 60 (with a writing score of 18)
Cambridge English Qualifications	B2 First or B2 First for Schools with a score of 154. No less than 154 in each skill.	B2 First or B2 First for schools with a score of 162. No less than 154 in each skill	B2 First or B2 First for schools with a score of 162. No less than 154 in each skill	B2 First, or B2 First for schools, or C1 Advanced, or C2 Proficiency with a score of 169. No less than 162 in each skill
OET	Minimum of Grade C or 200 in all sub-tests.	Minimum of Grade C or 200 in all sub-tests	Minimum of Grade C or 200 in all sub-tests	Minimum of Grade C or 200 in all sub-tests
NZCEL	Level 3 (General).	Level 3 (Applied).	Level 4 (General) or (Employment).	Level 4 (Academic).
Pearson Test of English (Academic)	PTE (Academic) score of 36 with no band score lower than 36.	PTE (Academic) score of 42 with no band score lower than 36	PTE (Academic) score of 42 with no band score lower than 36	PTE (Academic) score of 50 with no band score lower than 42
LanguageCert	B1 Achiever International ESOL Written (LRW) PASS with no less than 25/50 in each skill and Spoken (S) PASS.	B2 Communicator International ESOL Written (LRW) PASS with no less than 25/50 in each skill and Spoken (S) PASS.	B2 Communicator International ESOL Written (LRW) HIGH PASS with no less than 25/50 in each skill and Spoken (S) PASS	C1 Expert International ESOL Written (LRW) PASS with no less than 25/50 in each skill and Spoken (S) PASS
Trinity ISE	SE I with no less than distinction in any band.	ISE II with no less than pass in any band.	ISE II with no less than merit in any band	ISE II with no less than distinction in any band

^ English language requirements for Pharmacy Level 3, 4 & 5: IELTS 6.0 (General/Academic) with no band lower than 5.5 or equivalences approved by NZQA.

* The information is correct as of the time of publication (26 November 2025). For the most up-to-date information, please refer to www2.nzqa.govt.nz/tertiary/english-language-entry-requirements-for-international-students/

Note 1
The listed outcomes represent the minimum scores or grades for each test or qualification that qualify a student for enrolment at each programme level. Students with higher scores or grades than required for a particular programme level may still enrol at that level. Where the entry requirements for a programme are for a higher English proficiency outcome than is listed in the relevant row of the Table for the programme level in which the student is being enrolled, the student must meet that higher level.

Note 2
All test scores must be from a single report except:
TOEFL iBT where the test scores must be from a single report for a single test date, and the My best Scores option must not be used
LanguageCert where the test scores must be from a single report for Written (LRW) and a separate individual report for Spoken (S).

Study Options and Fees

COURSE TITLE	NZQA LEVEL	QUALIFICATION	DURATION	CAMPUS	TUITION FEE	RESOURCE + ADMIN FEE
PHARMACY						
Pharmacy Levels 3, 4 & 5 Combined (International)	5	NZ Certificate in Pharmacy (Introduction to Pharmacy Practice) (Level 3), NZ Certificate in Pharmacy (Pharmacy Technician – Core) (Level 4), NZ Certificate in Pharmacy (Pharmacy Technician – Advanced) (Level 5)	57 weeks (530 hours internship)	Auckland (Central)	\$33,075	\$3,400
CONSTRUCTION						
Certificate in Plumbing, Gasfitting and Drainlaying (Pre-Apprenticeship)	3	NZ Certificate in Plumbing, Gasfitting and Drainlaying (Level 3)	20 weeks	Auckland Trades South	\$9,975	\$1,400
Certificate in Trade Skills with strand in Paint and Plaster	3	NZ Certificate in Construction Trade Skills (Level 3) with strand Allied Trades	19 weeks	Auckland Trades South	\$9,975	\$1,400
Certificate in Carpentry Trade Skills	3	NZ Certificate in Construction Trade Skills (Level 3) (Carpentry strand)	32 weeks	Auckland Trades South	\$23,100	\$2,400
Certificate in Electrical Engineering	3	NZ Certificate in Electrical Pre-Trade (Level 3)	35 weeks	Auckland Trades South	\$23,100	\$2,400
Diploma in Construction – Construction Management strand	6	NZ Diploma in Construction (Level 6) with a strand in Construction Management	1.5 years	Auckland Sylvia Park	\$23,100/ 120 credits Total: \$46,200	\$4,400
Diploma in Construction – Quantity Surveying strand	6	NZ Diploma in Construction (Level 6) with a strand in Quantity Surveying	1.5 years	Auckland Sylvia Park	\$23,100/ 120 credits Total: \$46,200	\$4,400
HEALTH						
Certificate in Health and Wellbeing (Social and Community Services)	4	NZ Certificate in Health and Wellbeing (Social and Community Services) (Level 4)	33 weeks (200 hours internship)	Auckland (Central, Manukau), Hamilton, Wellington (Porirua), Christchurch	\$22,000	\$2,400
BAKING						
Certificate in Baking (Generalist)	4	NZ Certificate in Baking (Generalist) (Level 4)	35 weeks (5 weeks internship)	Auckland (Central)	\$22,000	\$2,400
Diploma in Cookery (Advanced) – Patisserie Strand	5	NZ Diploma in Cookery (Advanced) – (Level 5) (Patisserie Strand)	35 weeks (5 weeks internship)	No intakes available until further notice		
COOKERY						
Certificate in Cookery	4	NZ Certificate in Cookery (Level 4)	35 weeks (5 weeks internship)	Auckland (Central, Sylvia Park), Hamilton	\$22,000	\$2,400
Diploma in Cookery (Advanced) – Cookery Strand	5	NZ Diploma in Cookery (Advanced) – (Level 5) (Cookery Strand)	35 weeks (5 weeks internship)	Auckland (Central), Hamilton	\$22,000	\$2,400
Certificate in Cookery (Level 4) + Diploma in Cookery (Advanced) (Level 5)	4+5	NZ Certificate in Cookery (Level 4) & NZ Diploma in Cookery (Advanced) – (Level 5) (Cookery Strand)	70 weeks (10 weeks internship)	Auckland (Central, Sylvia Park), Hamilton	\$44,000	\$4,400
HOSPITALITY						
Diploma in Hospitality Management	5	NZ Diploma in Hospitality Management (Level 5)	35 weeks	Auckland (Sylvia Park)	\$22,000	\$2,400
Diploma in Hospitality Management	6	NZ Diploma in Hospitality Management (Level 6)	40 weeks (20 weeks internship)	Auckland (Sylvia Park)	\$22,000	\$2,400
Diploma in Hospitality Management (Level 5) + Diploma in Hospitality (Level 6)	5+6	NZ Diploma in Hospitality Management (Level 5) & NZ Diploma in Hospitality Management (Level 6)	75 weeks (20 weeks internship)	Auckland (Sylvia Park)	\$44,000	\$4,400
SPORT						
Diploma in Sport, Recreation, and Exercise (Multi-Sector)	5	NZ Diploma in Sport, Recreation and Exercise (Multi-Sector) (Level 5)	40 weeks	Auckland (Sylvia Park), Wellington, Christchurch	\$23,100	\$2,400
Diploma in Sport, Recreation and Exercise (Multi-Sector)	6	NZ Diploma in Sport, Recreation and Exercise (Multi-Sector) (Level 6)	40 weeks	Wellington, Christchurch	\$23,100	\$2,400

How to Apply

APPLY NOW



STEP 1

APPLICATION

Visit Enroller, our online enrolment portal, where you will be able to set up your account and manage the entire enrolment process from application through to arrival.
Enroller: enroller.app/up-education/enrolment-application

STEP 2

ACCEPTANCE

- Open the unconditional offer that you received from admissions@up.education.
- Read through the Contract of Enrolment and Enrolment Acceptance Form Sign and initial at the requested sessions and send them back to admissions@up.education.

STEP 3

PAYMENT

- Open browser on your computer/laptop/mobile/tablet and go to upcolleges.flywire.com.
- Change the language if you need by clicking the globe icon on the up-left side of the page.
- Choose the country that you are paying from and type in the NZD amount shown in the invoice on your unconditional offer.
- Follow the on-screen instructions to complete the payment.

Once your payment is received, you will receive an email from admissions@up.education with your receipt.

STEP 4

VISA APPLICATION

Apply for your student visa online with Immigration New Zealand at www.immigration.govt.nz/process-to-apply

If you are outside New Zealand when you apply for your visa you can choose to pay your tuition fees after your visa has been Approved in Principle (AIP). You must provide a tuition fee receipt after your application has been AIP in order to have your visa granted.

STEP 5

ENROLMENT

Once you received your visa, please send it to admissions team and you are good to book your flight ticket to New Zealand. You will receive the pre-arrival pack via email from the campus team once your visa has been received. Please arrive before the orientation date and attend the orientation at campus.

If you have any questions about the application process, contact the admissions team at admissions@up.education

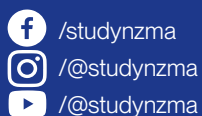
The Education (Pastoral Care of Tertiary and International Learners) Code of Practice 2021

UP Education, and its schools, is a signatory to The Education (Pastoral Care of Tertiary and International Learners) Code of Practice 2021. Published by the New Zealand Ministry of Education and administered by the New Zealand Qualifications Authority (NZQA), the Code is designed to ensure international students are well informed, safe and properly cared for.

Visit: www2.nzqa.govt.nz/tertiary/the-code

Every effort has been made to present accurate information in this NZMA International Students Course Guide as of the publication date, 05 February 2026.

UP Education reserves the right to change information without notice where this is considered necessary or desirable.



All enquiries and applications to:

NZMA Auckland Central Campus
100 Symonds Street, Grafton,
Auckland, 1010

P: +64-9-336 0040
E: international@up.education
W: nzma.ac.nz

